

# Fact sheet

## Siren control unit AT/AT-M Z+K



## Swiss engineered siren control unit AT/AT-M 250-500-750-1000 Z+K including batteries

Compact and user-friendly control unit with a modern design, combined with outstanding functional features and high-quality properties.

### Article number

- Art. no. AT Z + K 248.00.822
- Art. no. AT-M Z + K 248.00.823

### CE label

- EMV: guideline/directive 2014/30/EU
- Interference emissions EN 61000-3-3:2013
- Interference immunity EN 61000-3-2:2012
- Electromagnetic compatibility EN 55032:2012 and EN 50130-4:2011
- LVD: guideline/directive 2014/35/EU
- Installation for communication technology EN 62368-1:2014
- FOCIP authorisation no. BZS AL 17-801

### Electrical properties

- Supply voltage nominal value 85-264 V 50/60 Hz
- Power consumption, maximum 105 VA
- Temperature-compensated charging -25 °C ... 50 °C
- Battery voltage 24 V
- Supply for external devices 24 V DC, 5 W (18W)
- Charging current, maximum 2,5 A
- Standby current batteries 20 mA

### Climatic characteristics

- Operating temperature -20 °C - +60 °C
- Protection class control cabinet IP 56
- Cable ducts 4 pce M20 for Ø 8-13 m

### Amplifier

- Output power, maximum 2 x 500 W
- Bandwidth, alarm 0-3 kHz, +/- 3 dB
- Programmable input signals max. 6 signals
- Status display 2x LED



#### Communication interfaces

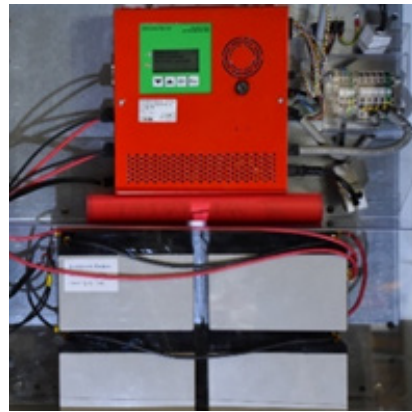
• LED display	2
• Grafic display	128 x 64 Pixel
• Push buttons	4
• Memory function	1000 activities
• Digital inputs, remote control with internal 24 V DC	6
• Additional digital inputs for internal and external key switch	2
• Digital outputs, open collector	15

#### Dimension and weight

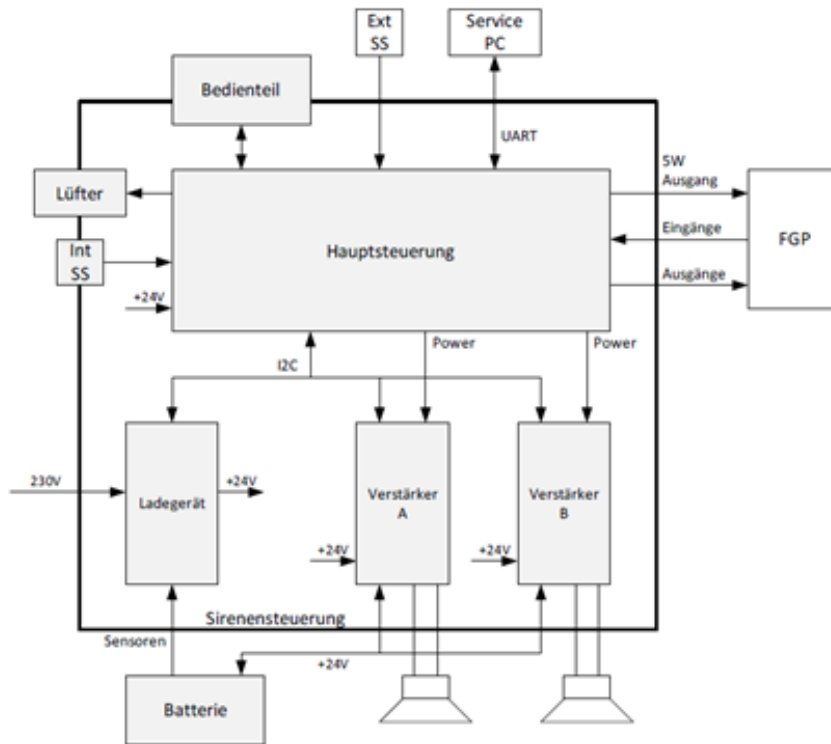
Control unit	cabinet	weight with/without batteries
• AT/AT-M 250 Z	500x500x210mm	38 kg / 20 kg
• AT/AT-M 500 Z	500x500x210mm	38 kg / 20 kg
• AT/AT-M 750 Z	500x500x210mm	44 kg / 20 kg
• AT/AT-M 1000 Z	500x500x210mm	44 kg / 20 kg
• AT/AT-M 250 K	500x500x210mm	38 kg / 20 kg
• AT/AT-M 500 K	500x500x210mm	44 kg / 20 kg
• AT/AT-M 750 K	500x500x210mm	44 kg / 20 kg
• AT/AT-M 1000 K	600x600x210mm	65 kg / 26 kg



AT-M with 2 batteries NPL38-12i



AT with 4 batteries NPL24-12i



System overview of control unit AT